

# Alphabet Line Twines

"Eye" the path and then trace it with a pencil. Stay on the line!

**Aa**

**Bb**

**Cc**

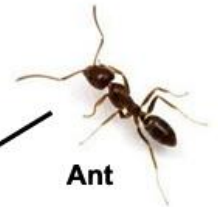
**Dd**



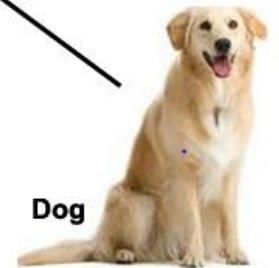
**Bear**



**Cat**



**Ant**



**Dog**

# Alphabet Line Twines

"Eye" the path and then trace it with a pencil. Stay on the line!

**Ee**

**Ff**

**Gg**

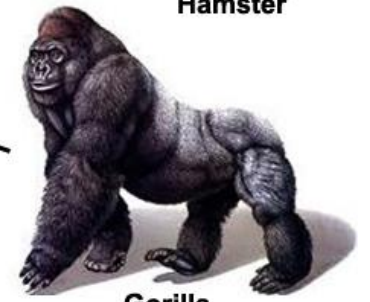
**Hh**



**Elephant**



**Hamster**



**Gorilla**



**Frog**

# Alphabet Line Twines

"Eye" the path and then trace it with a pencil. Stay on the line!

Ii

Jj

Kk

Ll



Jellyfish



Llama



Kangaroo



Iguana



# Alphabet Line Twines

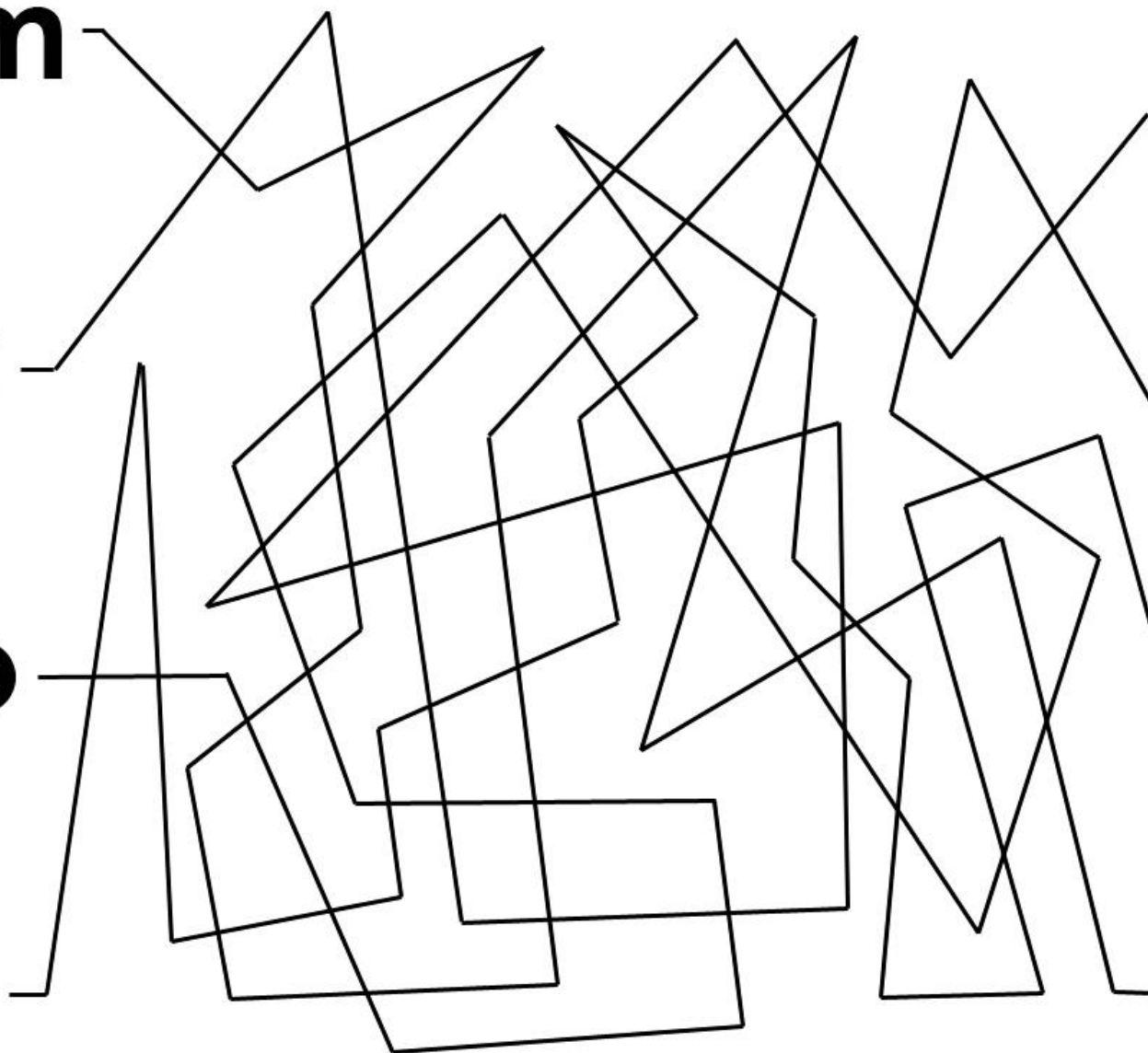
"Eye" the path and then trace it with a pencil. Stay on the line!

Mm

Nn

Oo

Pp



Nautilus



Octopus



Pelican



Moose

# Alphabet Line Twines

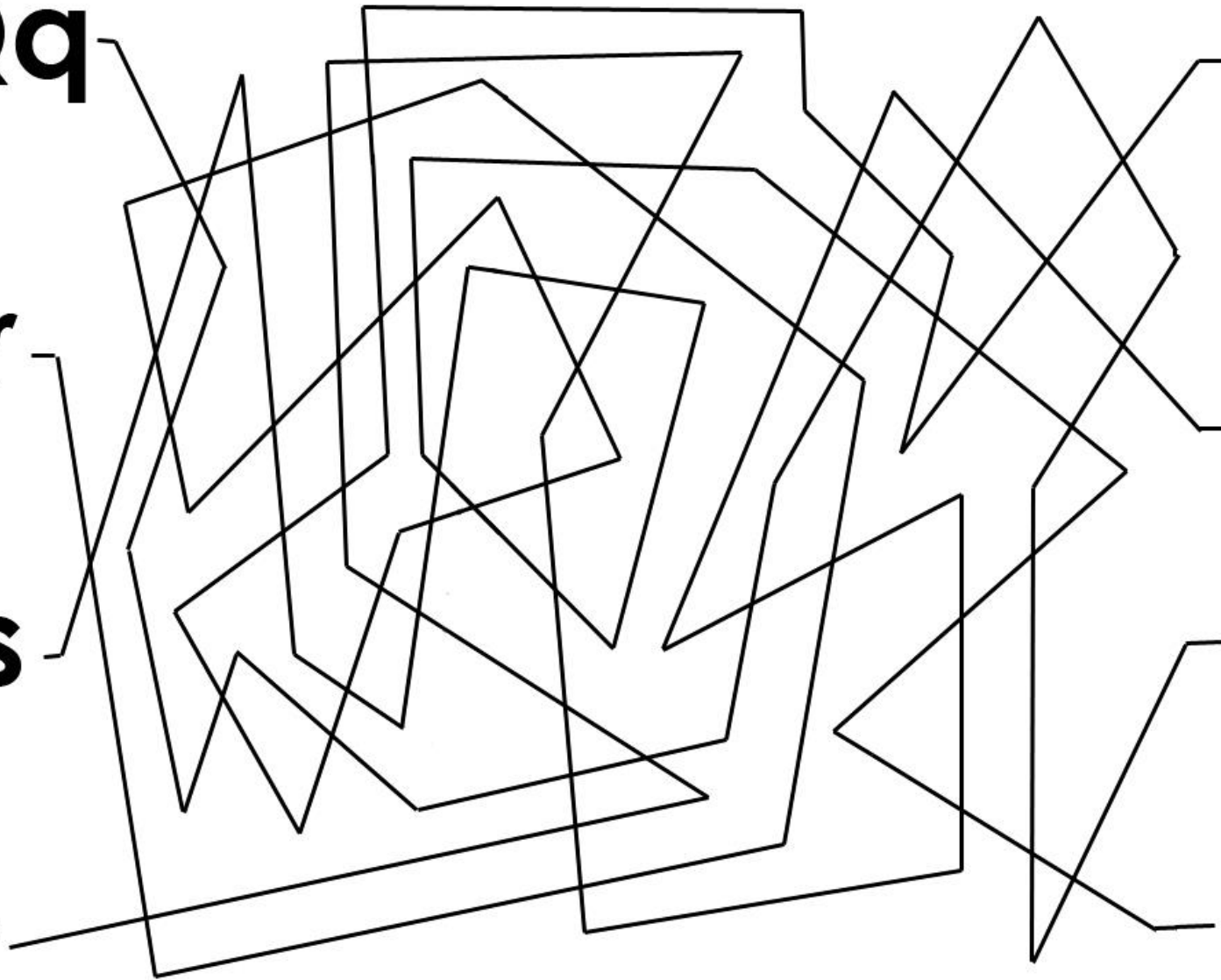
"Eye" the path and then trace it with a pencil. Stay on the line!

**Qq**

**Rr**

**Ss**

**Tt**



# Alphabet Line Twines

"Eye" the path and then trace it with a pencil. Stay on the line!

Uu

Vv

Ww

Xx

Yy

Zz

